

## Before Installation

Panels should be allowed to acclimate to room temperature and humidity for a minimum of 24 hours. Ideally the temperature and humidity during acclimation should be the same as the final operating conditions.

## Substrate Preparation

The wall substrate must be DRY and FREE from DIRT, DUST and GREASE. Walls should be flat and even. Remove high spots and fill low spots. Remove wallpaper, soluble or loose paint and other foreign matter that would interfere with a good adhesive bond.

## Installation Temperature

A minimum ambient temperature of 14°C / 57°F is necessary in all installation areas.

## Method of Fixing

Generally, Beplas panels can be installed either with adhesive or fasteners or a combination of the two. The choice of which method to use depends upon the room conditions and wall conditions.

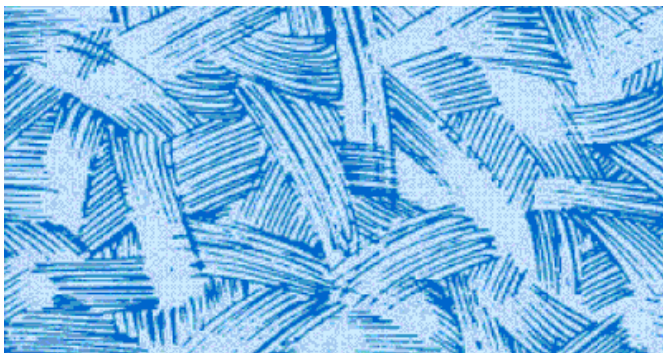
## Fastener Spacing

See fastener guide for full installation instructions.

## Applying Adhesive

Use Beplas Pro-Two part or GPPA One part adhesive. Apply and spread adhesive with a 5mm notched trowel. Adhesive should be applied directly to the back of the panel.

Beplas recommends 100% adhesive coverage using a "crosshatch" type pattern.



With a suitable roller, work down and outwards to ensure a flat installation without air pockets.

If adhesive alone is being used, double sided tape may be necessary to hold the panel in place while adhesive fully cures.

Ensure that a 3-4mm expansion gap is left at all joints, corners and edges.

## Joining Detail

All joints to be covered with 1- or 2-part PVC division bars ('H' Sections), or to be welded on site.

## Corner Detail

Internal and external corners to be covered with preformed PVC corner profiles. Alternatively Elite PVC panels may be thermoformed on site.

## Edge Detail

All exposed edges to be closed with PVC capping strip ('J' section).

## Installation Finishing

Beplas Food Grade / Sanitary silicone sealant should be applied in all mouldings and around all panel edges, fasteners, and fixtures to provide moisture proof installation.

## Service Preparations

Leave a 3-4mm gap around all holes to allow for silicone sealant.